

Technical briefing for FP2020

Financing for Family Planning



Presentation Overview

1. GFF partner countries and goals
2. Family planning situation in GFF countries
3. GFF Trust Fund investments in FP
4. GFF Replenishment

Global Financing Facility

Broader health and development framing

What results do we want to achieve?

Overall objective:

End preventable maternal, newborn, child and adolescent deaths and improve the health, nutrition and quality of life of women, adolescents and children

SDG targets:

- ▶ MMR <70/100,000
- ▶ U5MR <25/1,000
- ▶ NMR <12/1,000
- ▶ Universal access to SRHR services
- ▶ Nutrition: prevalence of stunting & malnutrition
- ▶ Universal health coverage

Closing the financing gap would **prevent 24-38 million deaths** by 2030

The GFF model: Countries lead the way

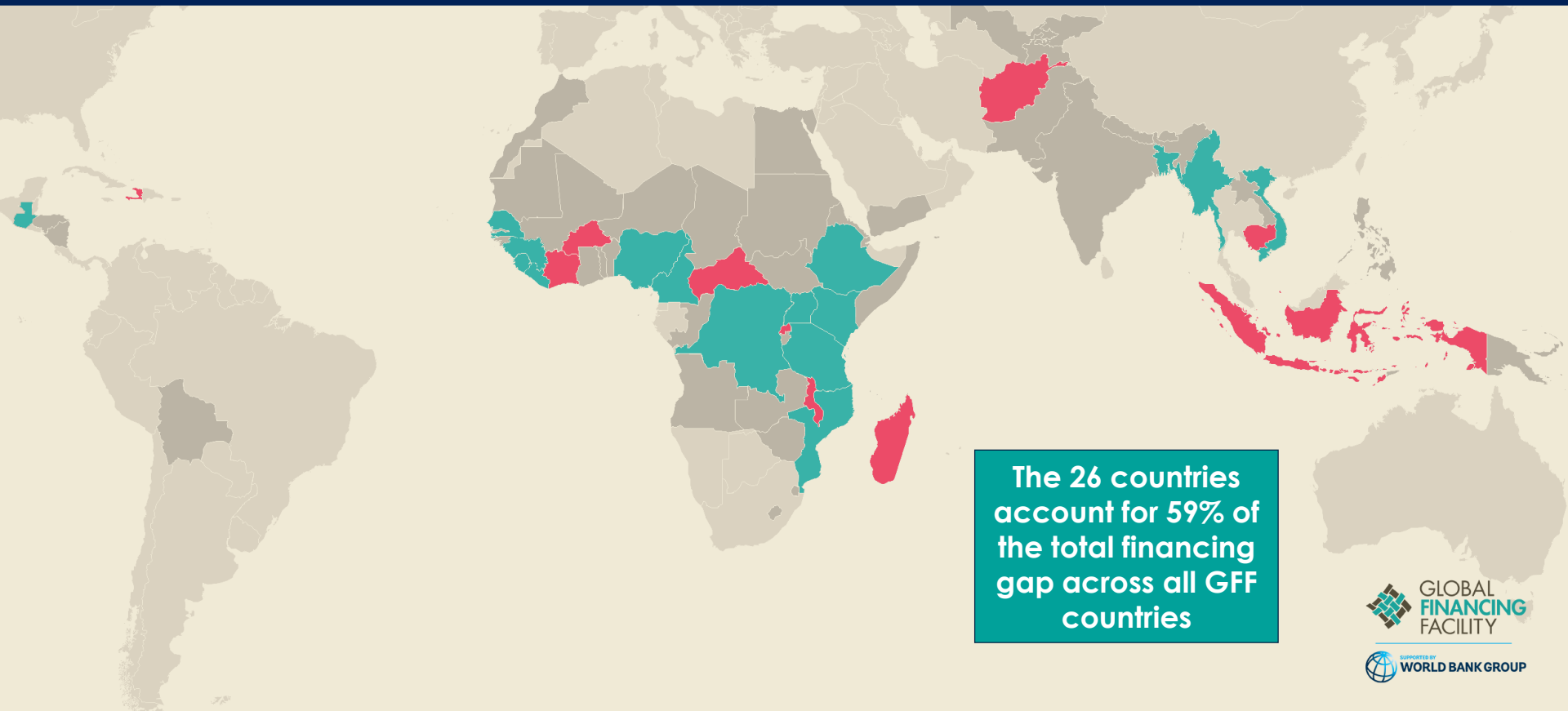
DRC
Ethiopia
Kenya
Tanzania
Bangladesh
Cameroon

Liberia
Mozambique
Nigeria
Senegal
Uganda
Guatemala

Guinea
Myanmar
Sierra Leone
Vietnam
Afghanistan
Burkina Faso

Cambodia
Central African Republic
Côte d'Ivoire
Haiti
Indonesia
Madagascar

Malawi
Rwanda



The 26 countries account for 59% of the total financing gap across all GFF countries

Status of investment cases

Investment case in development

Investment case complete

Investment case being implemented

Malawi
Cote d'Ivoire
Burkina Faso
Madagascar
Indonesia
Haiti
Afghanistan
Cambodia
CAR
Rwanda

Sierra Leone

Guinea
Kenya
Myanmar

Vietnam
Senegal

DRC

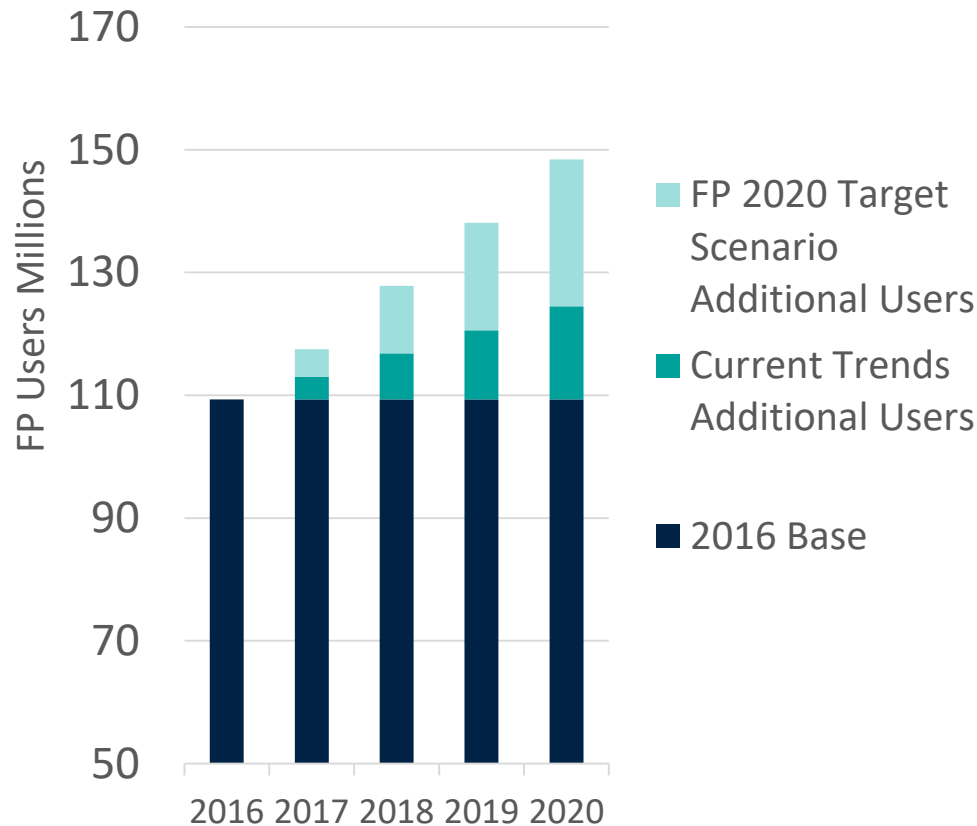
Cameroon
Tanzania
Uganda
Mozambique
Liberia
Nigeria
Bangladesh
Ethiopia
Guatemala

Global Financing Facility

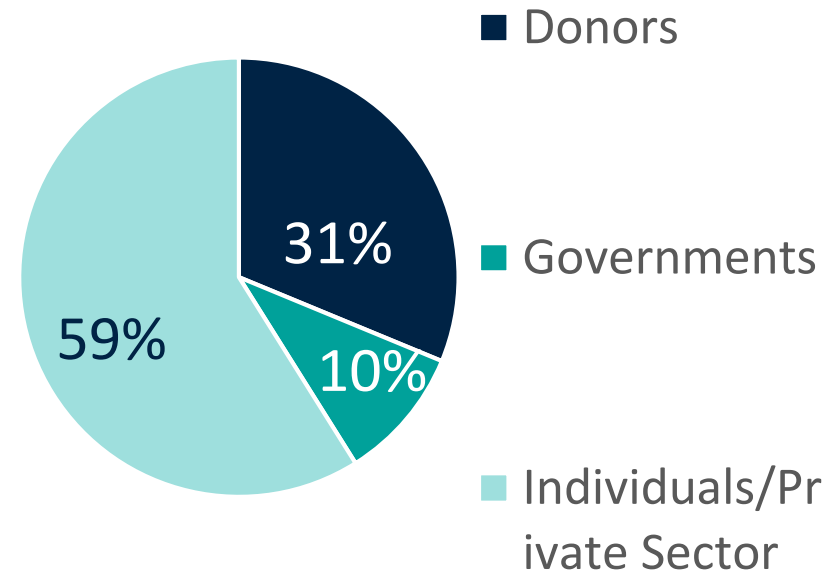
Family planning situation

Status in GFF Countries: Additional Users and Financing

Projected FP Users in 26 GFF Countries

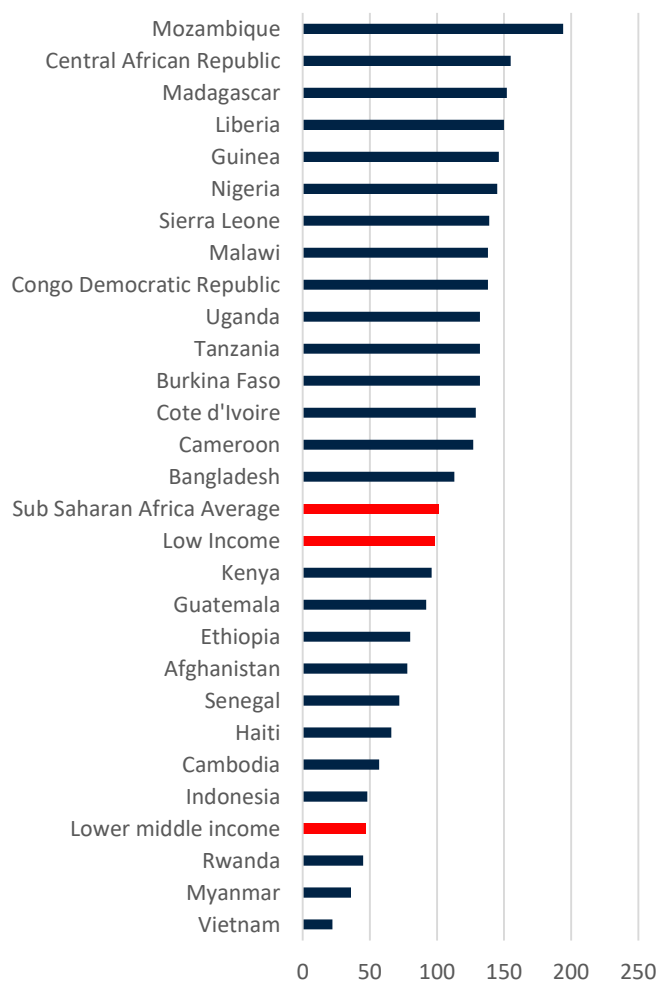


Source of Financing for FP Supplies in 26 GFF Countries (2014)



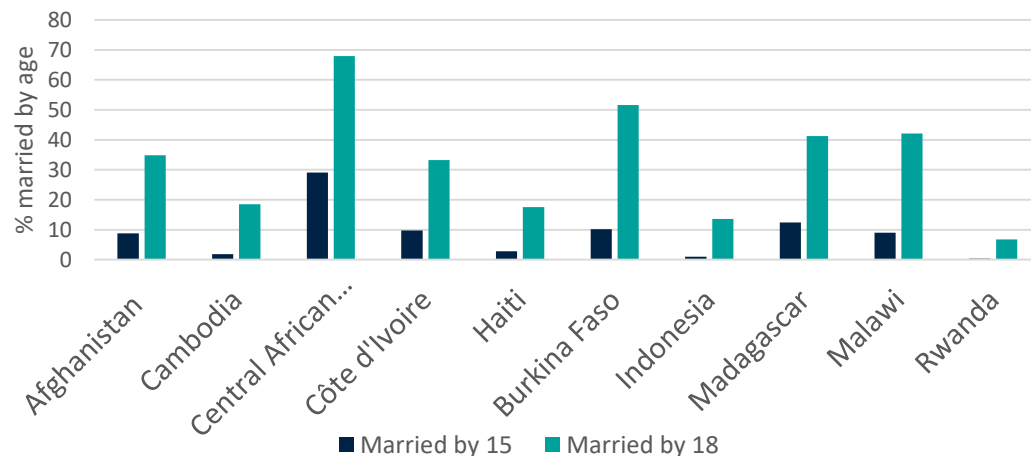
Status in GFF Countries: Adolescent Health and Fertility

Age specific fertility rate: 15-19



- Rates are high against country group comparators
- Important focus for adolescent health, maternal health, child health, and nutritional outcomes
- Early fertility is both **caused by and implicated in** high rates of child marriage across a number of GFF countries.
- Clear linkages to human capital agenda: empowerment, opportunity, violence reduction

Child Marriage

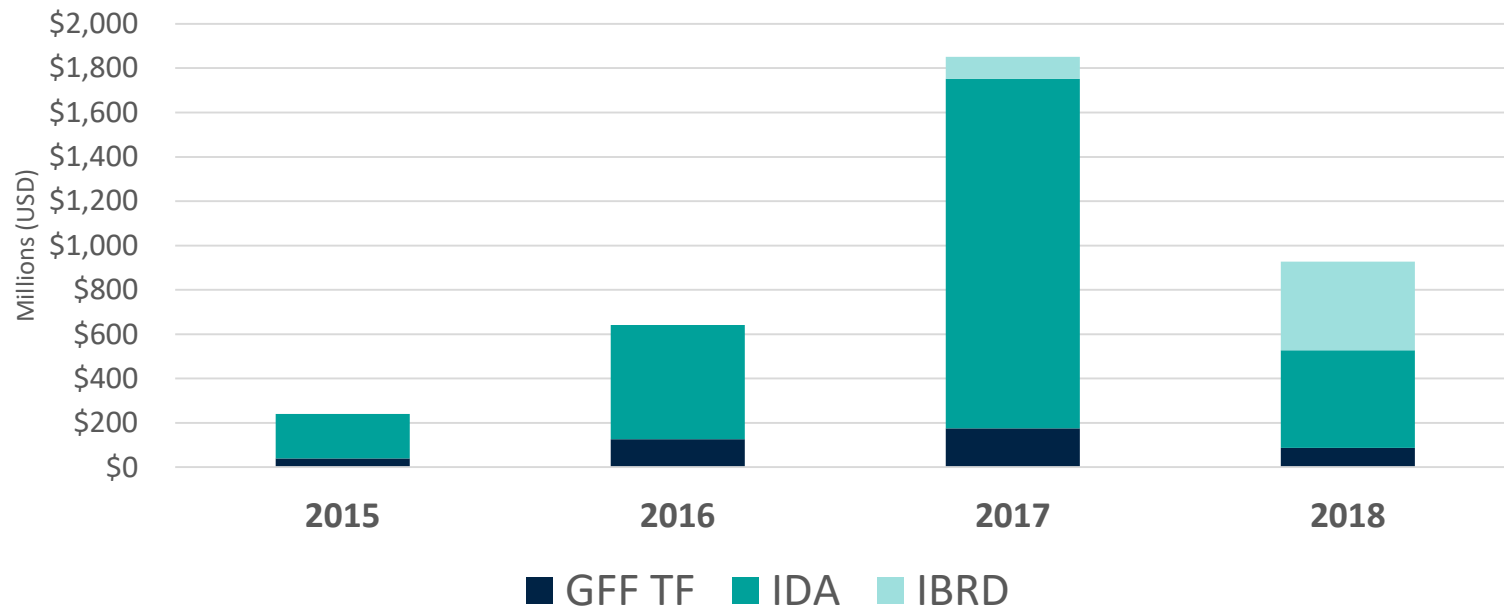


GFF Trust Fund

Trust fund and IDA/IBRD linked
investments in FP

GFF Trust Fund to Date

Global Financing Facility Portfolio Over Time (Committments)



Nearly \$7.50 from IDA and IBRD financing for every \$1.00 from the GFF TF

Family planning specific investments (Non-exhaustive)

- **Afghanistan:** Total project value is \$600 million with an MDTF, IDA, and the GFF TF. FP will get fee for service treatment under BPHS contracts to non-state actors.
- **Bangladesh:** Disbursement linked indicator (DLI) on post-partum FP expansion worth \$32.725 million.
- **Cameroon:** \$13 million for FP subsidies paid to facilities through RBF. Linked to DPL to shift budget resources to primary level and increase tax efficiency to support DRM.
- **DRC:** \$30 million for FP supplies in addition to FP purchased through RBF covering 60% of the country.
- **Ethiopia:** DLI focused on increasing rural mCPR worth \$17 million.
- **Guinea:** FP purchased through RBF package with supply side support for FP supplies procurement.
- **Kenya:** \$20 million for FP supplies and increasing county level mCPR is one of four indicators used to determine resource allocation to counties.

Family planning specific investments (Continued)

- **Liberia:** Family planning counselling will be paid through the facility level RBF scheme with \$1 million allocated to addressing adolescent health in target districts.
- **Mozambique:** DLI on couple years of protection and expansion of school-based health and FP provision valued at \$27 million.
- **Nigeria:** FP in the BHCPF fee-for service window (pipeline), FP paid out through RBF (NSHIP), large scale adolescent health effort to be financed in 1 state to address early fertility and inadequate spacing (ANRIN).
- **Rwanda:** Additional financing for national RBF package which includes FP (nutrition sensitive).
- **Tanzania:** Family planning included at facility and subnational RBF schemes. Discussions ongoing about strengthening adolescent health elements.
- **Uganda:** At least \$2.27 million for instrument sets for LARC. Likely support for implant procurement. FP is included in the RBF and support to front-line healthcare workers.

GFF Comparative Advantage and support for FP2020

Is there a plan to channel financing* or purchase from this channel?



How best to **purchase** family planning and RMNCAH (rights + VfM)

Is there a QA / QI strategy for the package and channel?



Family planning **commodity financing** scale-up and transition

Are there demand side efforts to support the package?

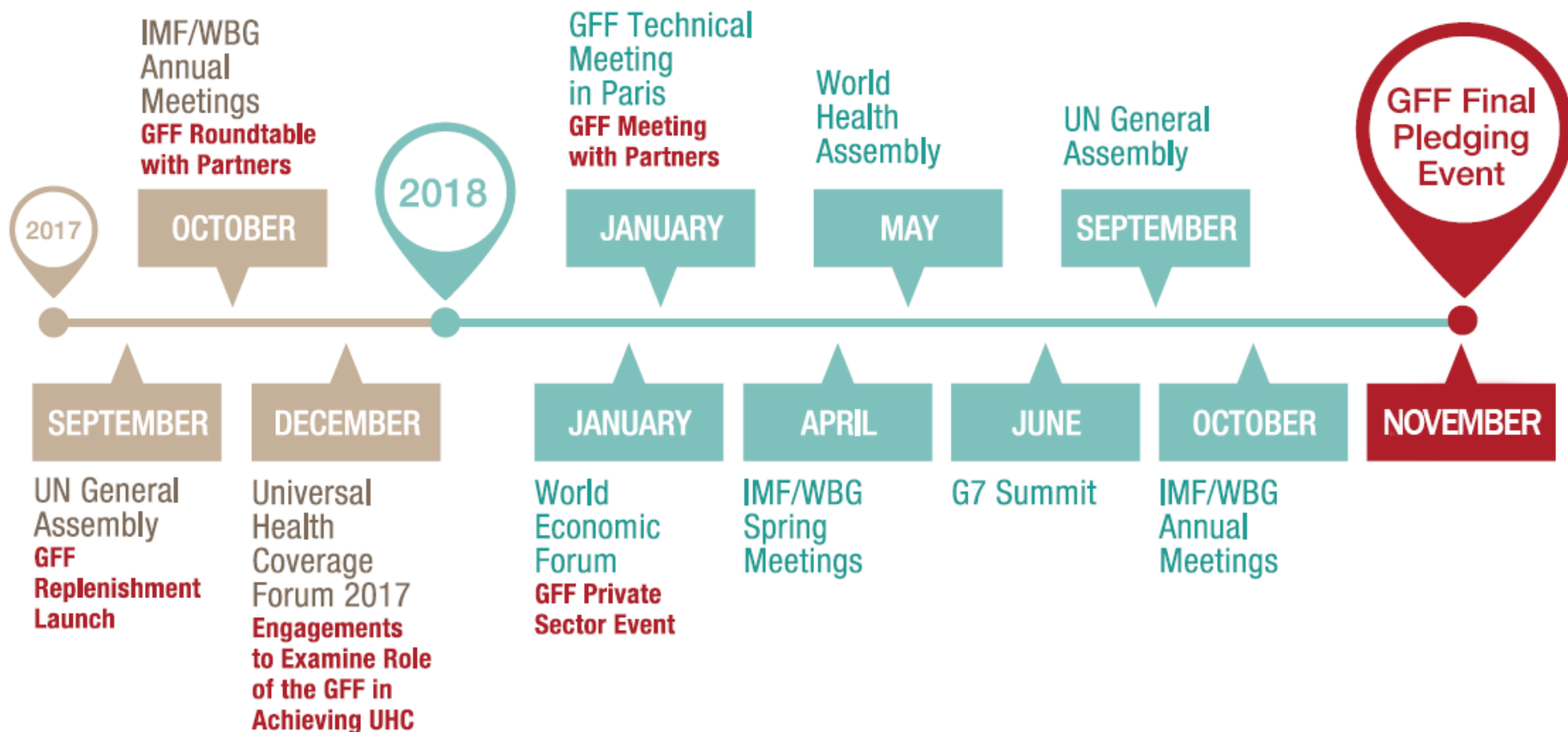


Demand side strategies and SP; Scalable and cost-effective platforms/interventions for ASRH;

GFF Replenishment

Update

GFF Replenishment Roadmap





Discussion