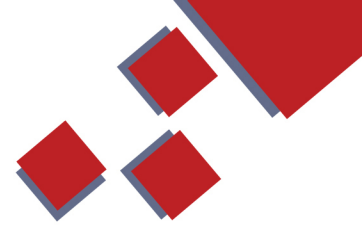
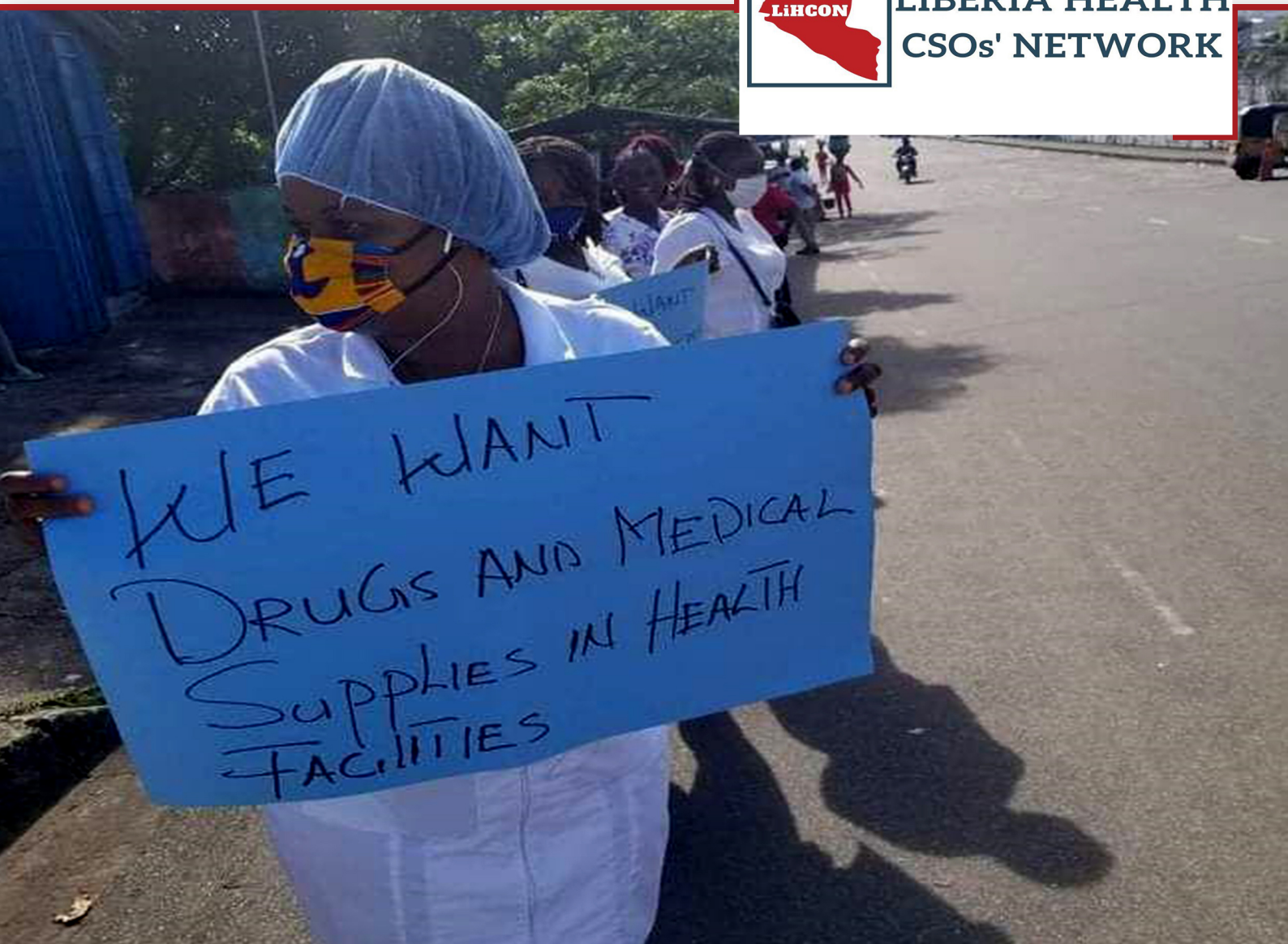


COVID-19 Health Facility Readiness & RMNCAH Essential Services & Drugs Scorecard



LIBERIA HEALTH
CSOs' NETWORK



SEPT 20
20



COVID-19 Health Facility Readiness and Essential RMNCAH Drugs scorecard Scoring System

| Readiness Indicator | Green | Yellow | Red |
|---|--|--|--|
| <p>Infection Prevention and Control (Triage & supplies) This segment covers 3 things namely: availability of Personal Protective Equipment for at least 3 months supplies of gloves, mask, face shields, disposal gowns and jumpsuit,</p> <p>Triage which looked at a segregated space ideally located at the front of the health facility, equipped with staff PPE, hand washing point for screening of all that visit the facility for COVID-19 like symptoms before entering the health facility,</p> <p>Supplies: Disinfectant supplies: Clorox, soap, liquid soap, hand sanitizer, hydrogen peroxide, (3 months' supply)</p> | <p>Availability of 3 months' supply, of personal protective equipment, Existence of a function triage with trained personnel Availability of a functional triage (staffed and fully equipped) for screening of all patients for COVID_19 like symptoms</p> | <p>Supplies is available but can't serve more than two months Triage available but not full staff or not screening clients Triage available. but no screening for COVID-19 like symptoms</p> | <p>Have not be supplied PPE triage available but not functional screening of all patients using the facility Staff in triage not wearing mask, hand washing facility not available at triage</p> <p>No supplies for disinfection and infection prevention and control</p> |
| <p>Health workers Capacity covers Capacity building of health workers on COVID-19 outbreak in Liberia, and supportive environment provided to enhance application of the skills and knowledge</p> | <p>All staff in the facility have been trained on COVID-19, Have the requisite IPC supplies and tools to enhance application of knowledge for protection of health workers while they work</p> | <p>At least half of the staff have been trained, two months' supply of IPC materials and job aid to enhance application of knowledge for protection of health workers</p> | <p>Below two staff have trained, no IPC supply no job aid to ensure supportive environment for protection of health works against COVID-19 while serving</p> |
| <p>Screening & Referral covers screening for people with respiratory symptoms, availability of functioning ambulance assigned or, availability of separate ambulance for transport of COVID 19 suspected patients, holding area for suspected COVID 19 case at health facility, referral pathway protocol on available in all screening area as well as setup of facilities to ensure physical distancing</p> | <p>Availability of routine screening for COVID-18 among people seeking care at health facility</p> <p>Availability of functioning ambulance assigned or, availability of separate ambulance for transport of COVID 19 suspected patients,</p> <p>Availability of holding area for suspected COVID 19 case at health facility,</p> <p>Availability of printed referral pathway protocol in all screening area as well as setup of facilities to ensure physical distancing</p> | <p>Screening on COVID-19 done on at need basis and not routine for all presenting at the facility</p> <p>There is ambulance available but not designated for suspected COVID 19 cases- Readily available for transport of patients (challenges of fuel and road)</p> <p>Identified holding area but not equipped to hold suspected COVID-19 cases</p> <p>Referral Pathway on COVID -19 protocol available not in all screening area</p> <p>Social distancing not fully ensure at</p> | <p>No Screening on COVID-19 for patient presenting at the facility</p> <p>There is no ambulance available nor designated for suspected COVID 19 cases- Readily available for transport of patients (challenges of fuel and road)</p> <p>No holding area identified for suspected COVID-19 cases</p> <p>No Referral Pathway on COVID -19 available anywhere in the health facility</p> <p>Social distancing not fully ensure as seen during visit</p> |
| <p>Water Sanitation & Hygiene, covers access to basic water facility, hand hygiene points, segregated waste management system at health facilities, designated IPC focal person as well as availability of IPC supplies</p> | <p>Water Sanitation & Hygiene, availability and access to basic water facility, hand hygiene points, segregated waste management system at health facilities, designated IPC focal person as well as availability of IPC supplies</p> | <p>Either available or not accessibility of basic water facility, hand hygiene points, segregated waste management system at health facilities, designated IPC focal person as well as availability of IPC supplies</p> | <p>Not available</p> |

| | Green | Yellow | Red | | | | | | | | | | | | | | | | | | | | | | | | | | | | | | | |
|--|--|--|--|-------------|--------------------------|-----------|----------------------|------------------------|-----------------------|-------------------|--------------|--------------------------------|--------------------------------------|-----------------------------------|--|----------------|---------------|------------|-------------|-----------------|---------|-----------|--------------|------------|------|-----|--------------|------------|-------------------|---------------|----------------|--|--|--|
| Water Sanitation & Hygiene , covers access to basic water facility, hand hygiene points, segregated waste management system at health facilities, designated IPC focal person as well as availability of IPC supplies | Water Sanitation & Hygiene, availability and access to basic water facility, hand hygiene points, segregated waste management system at health facilities, designated IPC focal person as well as availability of IPC supplies | Either available or not accessibility of basic water facility, hand hygiene points, segregated waste management system at health facilities, designated IPC focal person as well as availability of IPC supplies | Not available | | | | | | | | | | | | | | | | | | | | | | | | | | | | | | | |
| Availability of Essential RMNCAH services Covering Access to <ul style="list-style-type: none"> Family planning services & commodities Basic Emergency obstetric care (Bemoc) Emergency obstetric care (Emoc), Antenatal & Post-natal services, labor & delivery, Infection Prevention and Control (IPC) protocol set-up during delivery routine immunization services services for TB, HIV and Malaria Services for Treatment of sexually transmitted infections | All services listed are available of essential RMNCAH services | Less than 4 of the essential services listed are available | Less than 2 of the essential services listed | | | | | | | | | | | | | | | | | | | | | | | | | | | | | | | |
| Availability of essential RMNCAH drugs for the next 3 months | All listed drugs available | 75% of all drugs listed drugs available | 50% of all essential drugs listed available | | | | | | | | | | | | | | | | | | | | | | | | | | | | | | | |
| <table border="1"> <tr><td>Oxytocin</td></tr> <tr><td>Tetracycline Eye Ointment</td></tr> <tr><td>Chlorhexidine gel for cord</td></tr> <tr><td>Paracetamol</td></tr> <tr><td>Misoprostol/Mifepristone</td></tr> <tr><td>Vitamin K</td></tr> <tr><td>IV Fluids (R/L, N/S)</td></tr> <tr><td>Ampicillin/Amoxycillin</td></tr> <tr><td>Benzathine Penicillin</td></tr> <tr><td>Magnesium Sulfate</td></tr> <tr><td>Azithromycin</td></tr> <tr><td>Oral Family Planning commodity</td></tr> <tr><td>Injectable family planning commodity</td></tr> <tr><td>Implant family Planning Commodity</td></tr> <tr><td>IUCD Family planning device /commodity</td></tr> <tr><td>Ferrous Tablet</td></tr> <tr><td>Metronidazole</td></tr> <tr><td>Folic Acid</td></tr> <tr><td>Mebendazole</td></tr> <tr><td>Fansidar Tablet</td></tr> <tr><td>Quinine</td></tr> <tr><td>ACT Adult</td></tr> <tr><td>ACT children</td></tr> <tr><td>Artesunate</td></tr> <tr><td>Zinc</td></tr> <tr><td>ORS</td></tr> <tr><td>Cotrim Syrup</td></tr> <tr><td>Amox Syrup</td></tr> <tr><td>Paracetamol syrup</td></tr> <tr><td>Ferrous syrup</td></tr> <tr><td>Nystatin Syrup</td></tr> </table> | Oxytocin | Tetracycline Eye Ointment | Chlorhexidine gel for cord | Paracetamol | Misoprostol/Mifepristone | Vitamin K | IV Fluids (R/L, N/S) | Ampicillin/Amoxycillin | Benzathine Penicillin | Magnesium Sulfate | Azithromycin | Oral Family Planning commodity | Injectable family planning commodity | Implant family Planning Commodity | IUCD Family planning device /commodity | Ferrous Tablet | Metronidazole | Folic Acid | Mebendazole | Fansidar Tablet | Quinine | ACT Adult | ACT children | Artesunate | Zinc | ORS | Cotrim Syrup | Amox Syrup | Paracetamol syrup | Ferrous syrup | Nystatin Syrup | | | |
| Oxytocin | | | | | | | | | | | | | | | | | | | | | | | | | | | | | | | | | | |
| Tetracycline Eye Ointment | | | | | | | | | | | | | | | | | | | | | | | | | | | | | | | | | | |
| Chlorhexidine gel for cord | | | | | | | | | | | | | | | | | | | | | | | | | | | | | | | | | | |
| Paracetamol | | | | | | | | | | | | | | | | | | | | | | | | | | | | | | | | | | |
| Misoprostol/Mifepristone | | | | | | | | | | | | | | | | | | | | | | | | | | | | | | | | | | |
| Vitamin K | | | | | | | | | | | | | | | | | | | | | | | | | | | | | | | | | | |
| IV Fluids (R/L, N/S) | | | | | | | | | | | | | | | | | | | | | | | | | | | | | | | | | | |
| Ampicillin/Amoxycillin | | | | | | | | | | | | | | | | | | | | | | | | | | | | | | | | | | |
| Benzathine Penicillin | | | | | | | | | | | | | | | | | | | | | | | | | | | | | | | | | | |
| Magnesium Sulfate | | | | | | | | | | | | | | | | | | | | | | | | | | | | | | | | | | |
| Azithromycin | | | | | | | | | | | | | | | | | | | | | | | | | | | | | | | | | | |
| Oral Family Planning commodity | | | | | | | | | | | | | | | | | | | | | | | | | | | | | | | | | | |
| Injectable family planning commodity | | | | | | | | | | | | | | | | | | | | | | | | | | | | | | | | | | |
| Implant family Planning Commodity | | | | | | | | | | | | | | | | | | | | | | | | | | | | | | | | | | |
| IUCD Family planning device /commodity | | | | | | | | | | | | | | | | | | | | | | | | | | | | | | | | | | |
| Ferrous Tablet | | | | | | | | | | | | | | | | | | | | | | | | | | | | | | | | | | |
| Metronidazole | | | | | | | | | | | | | | | | | | | | | | | | | | | | | | | | | | |
| Folic Acid | | | | | | | | | | | | | | | | | | | | | | | | | | | | | | | | | | |
| Mebendazole | | | | | | | | | | | | | | | | | | | | | | | | | | | | | | | | | | |
| Fansidar Tablet | | | | | | | | | | | | | | | | | | | | | | | | | | | | | | | | | | |
| Quinine | | | | | | | | | | | | | | | | | | | | | | | | | | | | | | | | | | |
| ACT Adult | | | | | | | | | | | | | | | | | | | | | | | | | | | | | | | | | | |
| ACT children | | | | | | | | | | | | | | | | | | | | | | | | | | | | | | | | | | |
| Artesunate | | | | | | | | | | | | | | | | | | | | | | | | | | | | | | | | | | |
| Zinc | | | | | | | | | | | | | | | | | | | | | | | | | | | | | | | | | | |
| ORS | | | | | | | | | | | | | | | | | | | | | | | | | | | | | | | | | | |
| Cotrim Syrup | | | | | | | | | | | | | | | | | | | | | | | | | | | | | | | | | | |
| Amox Syrup | | | | | | | | | | | | | | | | | | | | | | | | | | | | | | | | | | |
| Paracetamol syrup | | | | | | | | | | | | | | | | | | | | | | | | | | | | | | | | | | |
| Ferrous syrup | | | | | | | | | | | | | | | | | | | | | | | | | | | | | | | | | | |
| Nystatin Syrup | | | | | | | | | | | | | | | | | | | | | | | | | | | | | | | | | | |



This score card has been designed to track readiness of health facilities in 45 selected facilities across 5 counties in Liberia. It will be used primarily to identify readiness gaps at health facilities and advocate for increase investment in readiness of the health system to response to COVID-19 outbreak and ensure the availability of essential Reproductive Maternal Newborn Child and Adolescent Health (RMNCAH) services at targeted health facilities during and after COVID-19

Consolidated COVID-19 Health Facility Readiness Score Card for all 5 counties assessed

| County | Infection Prevention and Control (Infrastructures & supplies | Health worker Capacity Building | Screening & Referral | Infection, Education , Communication | WASH | RMNCAH Services | Essential RMNCAH Drugs Availability |
|---------------|---|---------------------------------|----------------------|--------------------------------------|--------|-----------------|-------------------------------------|
| 1 Montserrado | 48% | 48% | 28.80% | 62% | 89.50% | 91% | 36% |
| 2 Grand Kru | 54.60% | 100% | 32% | 40% | 100% | 100% | 60.80% |
| 3 Grand Bassa | 71.30% | 75% | 40% | 88% | 93% | 100% | 48.00% |
| 4 Rivercess | 65.20% | 100% | 26% | 45% | 100% | 100% | 61.20% |
| 5 Sinoe | 64.20% | 85% | 36% | 60% | 97% | 100% | 59.50% |



LIBERIA HEALTH CSOs' NETWORK

Montserrado County Covid Health Facility Readiness Score Card

| Facility Name | Infection Prevention & Control (Infrastructure, Equipment and Supplies | Health care workers Capacity building on COVID-19 | Screening and Referral (routine screening and referral for COVID-19 like symptoms to prevent COVID-19 outbreak in HF) | Information, Education and Communications (COVID-19 Prevention & Control is dissemination | Water, Sanitation and Hygiene- Access and availability of basic water , sanitation and hygiene in facility | Available Essential RMNCAH health services | Availability of RMNCAH Essential drugs |
|-------------------------|--|---|--|--|--|--|--|
| Barnesville H/C | 40% | 100% | 13% | 100% | 100% | 100% | 23% |
| Bensonville Hospital | 70% | 75% | 57% | 50% | 100% | 100% | 56% |
| Camp Sandee Ware | 60% | 0% | 57% | 100% | 100% | 56% | 54% |
| Careyburg Clinic | 25% | 25% | 25% | 50% | 100% | 68% | 16% |
| Chocolate city clinic | 60% | 75% | 36% | 25% | 100% | 100% | 24% |
| Lara Town Clinic | 100% | 50% | 42% | 100% | 100% | 100% | 40% |
| Cruziville Clinic | 30% | 75% | 29% | 50% | 75% | 100% | 33% |
| Dr. Agnes Varies Clinic | 12.50% | 0 | 0 | 25% | 75% | 100% | 77.40% |
| Harrisburg Clinic | 60% | 75% | 43% | 75% | 100% | 100% | 50% |
| James Davis Hospital | 60% | 0% | 57% | 100% | 100% | 56% | 54.80% |
| Johnsonville Clinic | 80% | 25% | 29% | 88% | 100% | 100% | 41.90% |
| Kingsville Clinic | 0% | 25% | 7% | 25% | 25% | 100% | 17.70% |
| Louisina Clinic | 30% | 100% | 24% | 60% | 100% | 100% | 33% |
| New georgia Clinic | 60% | 50% | 43% | 75% | 75% | 88% | 53% |
| Omenga Comm. Clinic | 12.50% | 0% | 0% | 12.50% | 75% | 100% | 45% |
| Pipeline Health Center | 100% | 50% | 29% | 100% | 100% | 100% | 19% |
| Providence Clinic | 30% | 0% | 0% | 50% | 88% | 75% | 70.90% |
| Slipway Clinic | 80% | 88% | 43% | 50% | 88% | 88% | 31% |
| White Plains Clinic | 80% | 100% | 14% | 50% | 100% | 100% | 32% |
| Total Ave | 52% | 48% | 28.80% | 62% | 89.50% | 91% | 36% |

Grand Kru County COVID-19 Readiness Health Facility Score Card

| Grand Kru County | Infection Prevention & Control (| Health workers Capacity building | Screening & Referral | Information, Education & Communication | Water, Sanitation & Hygiene | Availiability of RMNCAH Serv | Availiability of RMNCAH dr |
|------------------------------|----------------------------------|----------------------------------|----------------------|--|-----------------------------|------------------------------|----------------------------|
| 1 Gbanken Clinic | 33% | 100% | 43% | 50% | 100% | 75% | 64.50% |
| 2 Rally Town Hospital | 90% | 100% | 43% | 50% | 100% | 100% | 70% |
| 3 Gbalakpo Clinic | 40% | 100% | 29% | 25% | 75% | 75% | 41% |
| 4 Picniccess Clinic | 40% | 100% | 14% | 25% | 75% | 75% | 61.20% |
| 5 Barclayville Health Center | 70% | 100% | 29% | 50% | 100% | 100% | 67.70% |
| Grand Ave: | 54.60% | 100% | 32% | 40% | 100% | 100% | 60.80% |

Grand Bassa County COVID-19 Readiness Health Facility Score Card

| Grand Bassa County | Control (Infrastructure, Equipment & Supplies) | Health Worker Capacity Building on COVID-19 | Screening & Referral | Information, Education & Communication | Water, Sanitation & Hygiene | Availability of RMNCAH Services | Availability of RMNCAH drugs |
|-----------------------|--|---|----------------------|--|-----------------------------|---------------------------------|------------------------------|
| 1 Well Baby Clinic | 88% | 75% | 57% | 75% | 100% | 100% | 19.00% |
| 2 Sue Town Clinic | 60% | 75% | 43% | 75% | 100% | 94% | 32% |
| 3 Bokay Town Clinic | 90% | 75% | 43% | 75% | 100% | 100% | 34% |
| 4 Barconnie Clinic | 60% | 75% | 14% | 100% | 75% | 100% | 65% |
| 5 Loydville Clinic | 20% | 75% | 29% | 75% | 100% | 100% | 58.00% |
| 6 Edina Clinic | 60% | 75% | 43% | 100% | 100% | 100% | 62.90% |
| 7 Little Bassa Clinic | 100% | 75% | 29% | 100% | 100% | 100% | 50% |
| 8 Compound #1 Clinic | 60% | 75% | 29% | 100% | 75% | 100% | 43.00% |
| 9 Owensgroove Clinic | 75% | 75% | 29% | 100% | 75% | 100% | 41.00% |
| 10 LGH | 100% | 75% | 86% | 75% | 100% | 100% | 77.00% |
| Grand Ave: | 71.30% | 75% | 46% | 88% | 93% | 100% | 48.00% |

Rivercess County COVID-19 Readiness Health Facility Score Card

| Rivercess County | Infection Prevention & Control | Health workers Capacity building on COVID 19 | Screening & Referral | Information, Education & Communication | Water, Sanitation & Hygiene | Availability of RMNCAH Services | Availability of RMNCAH drugs |
|-----------------------|--------------------------------|--|----------------------|--|-----------------------------|---------------------------------|------------------------------|
| 1 Charlie Town Clinic | 37% | 100% | 29% | 25% | 100% | 100% | 53.20% |
| 2 Gbedia Clinic | 69% | 100% | 0% | 25% | 100% | 100% | 60% |
| 3 OBS Clinic | 88% | 100% | 43% | 100% | 75% | 100% | 71% |
| 4 Gblorseo Clinic | 63% | 75% | 14% | 25% | 100% | 100% | 66.10% |
| 5 Fen River Clinic | 69% | 100% | 43% | 50% | 100% | 100% | 56.40% |
| Grand Ave: | 65.20% | 100% | 26% | 45% | 100% | 100% | 61.20% |

Sinoe County COVID-19 Readiness Health Facility Score Card

Sinoe County services and Drugs preparedness

| Sinoe County | (Infrastructure, Equipment & Supplies) | Health workers Capacity building on COVID 19 | Screening & Referral | Information, Education & Communication | Water, Sanitation & Hygiene | Availability of RMNCAH Services | Availability of RMNCAH drugs |
|-----------------------|--|--|----------------------|--|-----------------------------|---------------------------------|------------------------------|
| 1 Kwituzon Clinic | 50% | 100% | 43% | 50% | 100% | 100% | 59.60% |
| 2 Saywon Town Clinic | 10% | 50% | 41% | 50% | 87% | 100% | 76% |
| 3 Tubmanville Clinic | 50% | 100% | 29% | 75% | 100% | 100% | 61% |
| 4 Wiah Town Clinic | 88% | 100% | 36% | 100% | 100% | 100% | 50.00% |
| 5 Grigsby Farm Clinic | 21% | 75% | 29% | 25% | 100% | 100% | 51.60% |
| Sub Ave: | 43.80% | 85% | 36% | 60% | 97% | 100% | 59.50% |

SUMMARY OF FINDINGS:

Majority of the health facilities assessed across the 5 counties lack basic infection prevention and control infrastructures and supplies with Montserrado as the epic center of the outbreak scoring the least at 48%. This is critical as it affects health workers safety and confidence as well as health seeking behaviour of the population.

Many of the health workers within the facilities assessed across the counties have received various level of trainings or capacity building on COVID-19 however the supportive environment has not been ensured to apply said skill and knowledge as there is inadequate supply of IPC materials, essential drugs and equipment.

There is absolutely no screening put in place at health facilities to for COVID-19, this shows a significant weakness in our capacity to end the outbreak within time.

There is significant lack of information, education, and communication materials on COVID-19 at health facilities across the 5 counties.

There is adequate availability and access to WASH facilities.

Reproductive Maternal Newborn, Child and Adolescent Health services are said to have the staff with the skills however there are significant stockout of essential RMNCAH drugs and supplies to ensure these are provided.

RECOMMENDATIONS BASED ON SCORECARD READING

1. That the Government of Liberia ensures infection prevention and control supplies and equipment are available, accessible, and equitably distributed across Liberia for health workers within the public health system as well as ensure private health facilities are providing same for their health work force. This includes PPE Kits and supplies.
2. That health care workers both in private and public facilities are provided adequate incentives and right training, skills, equipment, resources and supplies to respond to COVID-19 and other health needs of the population.
3. That risk communication and community engagement is robust and efficient to counter rumors and misinformation surrounding COVID-19 response in Liberia by providing health facilities with information, education and communication materials.
4. That Government invests in readiness of the health system to response to the outbreak and ensure essential Reproductive, Maternal, Newborn and Child Health (RMNCAH) services are not interrupted. This includes access to family planning services & commodities, access to Basis Emergency obstetric care (Bemoc) and Emergency obstetric care (Emoc), Antenatal & Post-natal services, labor & delivery, routine immunization services and services for TB, HIV and Malaria.
As the result of COVID-19 pandemic, it is reported that Liberia has recorded 35% drop in consultations for children under five years of age (largest Reduction among 63,00 health facilities worldwide), with a significant drop in the number of children fully vaccinated (35% drop), and The number of women who attended all four recommended medical visits during pregnancy dropped (18%), according to new findings released by the Global Financing Facility for Women, Children.
5. That government of Liberia increase domestic financing to meet the Abuja declaration of 15%. Currently, Health budget for FY2020/21 is 66.9M representing 12.5 percent of the national. When compared with 2019/20 recast budget of 87.0M it shows 23.1 percent decrease in allocation.

ABOUT US:

LIBERIA HEALTH CSOs NETWORK (LIHCON) is a membership CSO organization working to promote civil society participation towards influencing public policy, domestic resource mobilization and accountability within the health sector in Liberia through collective advocacy.

PARTNERS:

This scorecard was made possible through the support of Population Action International (PAI) with funding from Bill and Melinda Gates Foundation towards Civil Society platform strengthening for engagement in the Global Financing Facility for Women and Children a catalyst for sustainable health financing.

CONTACT US:



**Liberia Health CSOs Network | VOA Junction, |
RIA Highway, | Gbengbar Town, Paynesville**



liberiahealthcsosnetwork@gmail.com



Tel: +231775171586

FOLLOW US ON FACEBOOK